

great 3 rooms at Lainz

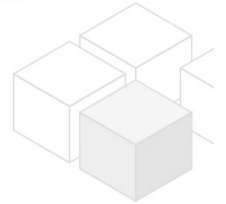
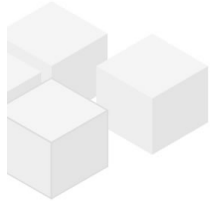
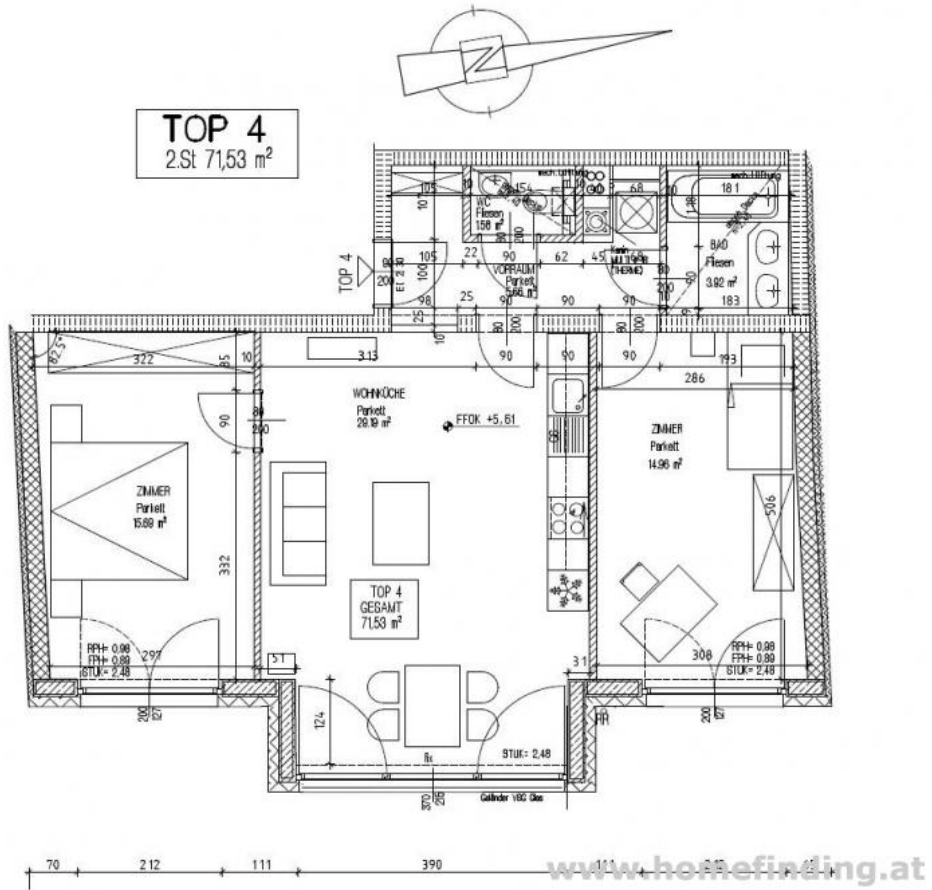


📍 1130 Wien, Proximity: Lainzer Platz, Wambacher

€ 1.318,74/month



Plans



About Property

The apartment is located next to Lainzer Platz and has great infrastructure nearby.

LOCATION

supermarkets, bakery shop, banks, restaurants, Bipa, DM, police office, schools, kindergarden can be found around the corner. The tram 60 connects to U4 Kennedybrücke/ Schloß Schönbrunn.

PROPERTY

The apartment itself shows following rooms:

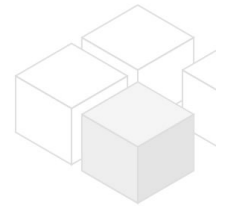
- .entree
- .ca 29m² living dining room
- .open kitchen
- .2 bedrooms
- .bathroom (tub)
- .separate toilet

equipment:

- .wooden and tiled floors
- .basement
- .blinds
- .in house garage possible € 174,90/ month.

COSTS

- rent: general maintenance costs and VAT included
- deposit: 4,5 gross rents
- fee for setting-up the contract: € 600,00



General

Propertynumber	9303
Property type	Wohnung

Costs

net rent	€ 1.037,19
gross rent	€ 1140.91
operating cost	€ 177.83
total rent	€ 1.318,74

Keyfacts

living area	71.53m ²
rooms	3
bedroom	2
bath	1
WC	1

Property age	Neubau
condition	sehr gut
Available from	sofort
Contract type	befristet

Furnishing

type of heating	Etagenheizung
Flooring	Parkettboden
parking	Garage
kitchen	ja
elevator	ja

Energy Performance Certificate

HWB Energieklasse	B
fGEE Energieklasse	A

Lage

Verkehrsanbindung Nähe	60 Lainzer Platz, Wambacher
---------------------------	--------------------------------

