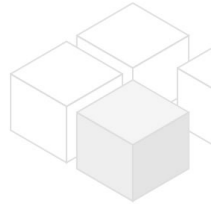
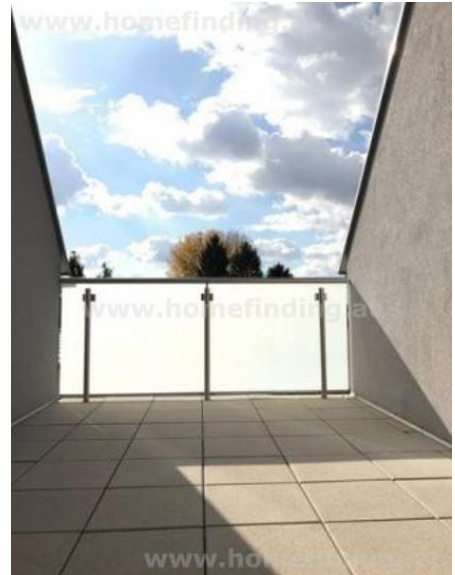


# semi detached house

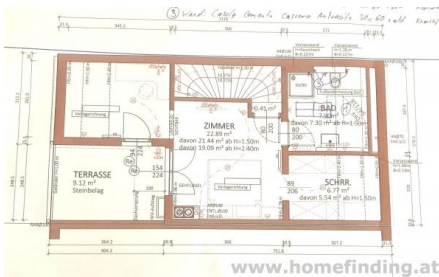
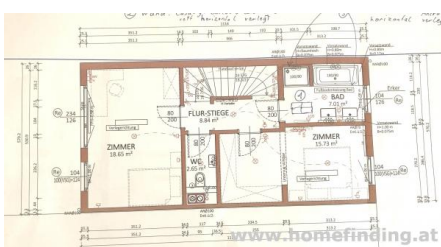
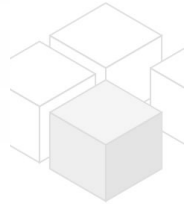
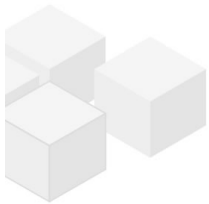
📍 1220 Wien, Proximity: Rehlackenweg

€ 2.990,-/month





## Plans



## About Property

This modern house is located near the Donauzentrum: the local supply is fully covered. The VIS, UNO City, Japanese School, Alte Donau etc. are also easily accessible. The U1 takes you to the city center in just a few minutes. The apartment itself offers the following rooms:

Level 1: entree, living dining room with open kitchen and access to the terrace and the garden, separate toilet.

Level 2: hallway, 2 bedrooms, bathroom (tub, shower), toilet

Level 3: hallway, large bedroom, walk-in wardrobe, bathroom with shower and toilet, terrace

Level -1: 3 rooms

equipment: wooden and tiled floors, Garden (~ 60m<sup>2</sup>), terrace (~18m<sup>2</sup>)

rent: general maintenance costs and VAT included

deposit: 3 gross rents

## General

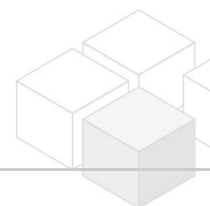
Property number	7749
Property type	Haus

## Costs

total rent	€ 2.990,-
------------	-----------

## Keyfacts

living area	147m <sup>2</sup>
Nutzfläche	197m <sup>2</sup>
Grundfläche	200m <sup>2</sup>
Grünfläche	60m <sup>2</sup>
Kellerfläche	50.52m <sup>2</sup>
rooms	4
bedroom	3
bath	2
WC	3
Property age	Neubau
condition	sehr gut
Available from	1. August 2020
Contract type	befristet



## Furnishing

---

type of heating	Zentralheizung
Flooring	Parkettboden
parking	--
kitchen	ja
Klimaanlage	ja
Terrasse	1
Kabelfernsehen	ja
Satellitenfernsehen	ja

## Energy Performance Certificate

---

HWB (kwh/m <sup>2</sup> /Jahr)	43
--------------------------------	----

## Lage

---

Verkehrsanbindung	25, 93A
Nähe	Rehlackenweg

