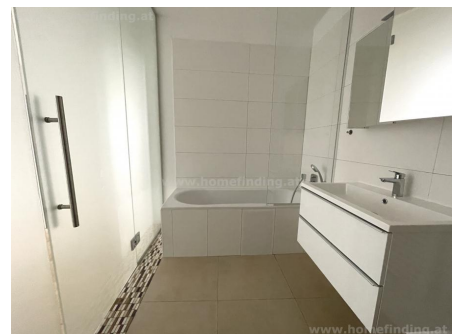


great 4 rooms close to Lycee

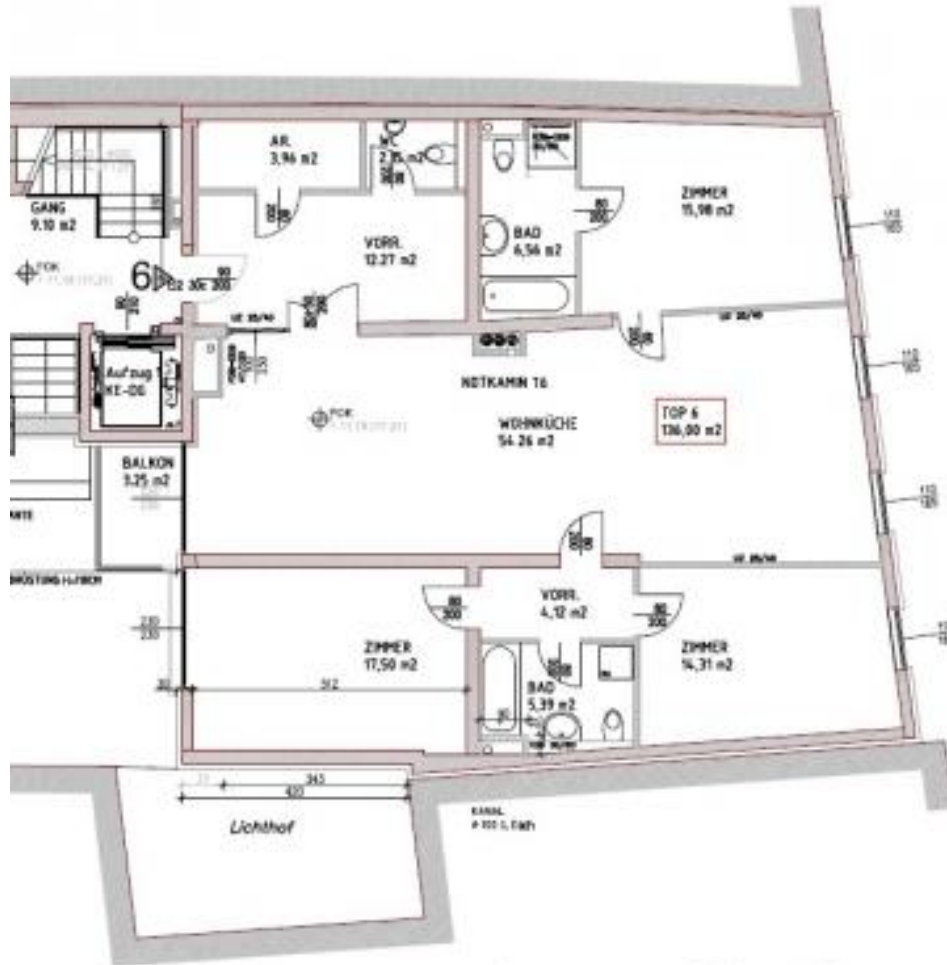
📍 1090 Wien, Proximity: Liechtensteinstraße, Lycee

€ 3.198,80/month



Plans

SS



www.homefinding.at

About Property

This great flat is situated on third floor of a building at Porzellangasse/ near Servitenviertel - walking distance to Lycee.

LOCATION

Shops, restaurants, supermarkets etc can be found just around the corner. The public lines 40A, U4, D connect fast to other districts.

PROPERTY

The apartment shows following rooms:

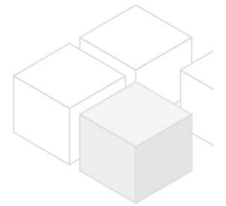
- .entree
- .54m² living dinning room with open kitchen and balcony .bedroom
- .bathroom (tub, shower, toilet) - street facing
- .small hallway
- .2 further bedrooms
- .second bathroom (tub, toilet)
- .guest toilet
- .storage room.

EQUIPMENT:

- .wooden and tiled floors
- .gas heating
- .basement storage room
- .floor heating.

COSTS

- rent: general maintenance costs and VAT included
- deposit: 3 gross rents
- commission: 2 rents + 29% VAT



General

Propertynumber	6903
Property type	Wohnung

Costs

operating cost	€ 448.8
total rent	€ 3.198,80

Keyfacts

living area	136m ²
rooms	4
bedroom	3
bath	2

WC	3
Property age condition	Altbau sehr gut
Available from	1.8.2024
Contract type	befristet

Furnishing

type of heating	Zentralheizung
Flooring	Parkettboden
parking	--
kitchen	ja
balcony	ja
elevator	ja

Energy Performance Certificate

HWB Energieklasse	D
-------------------	---

Lage

Verkehrsanbindung Nähe	D, 40A, U4 Lichtensteinstraße, Lycee
---------------------------	---

