

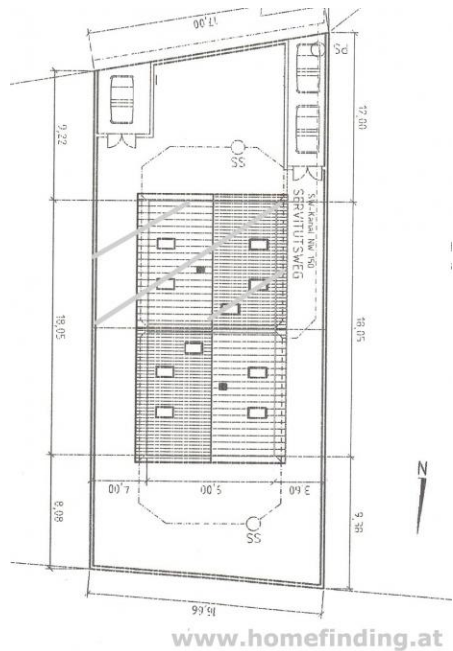
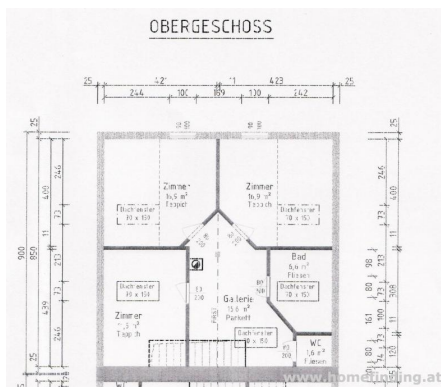
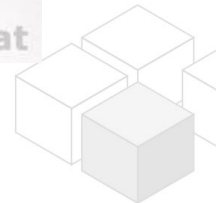
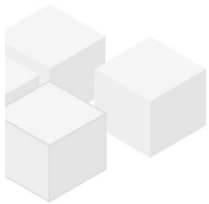
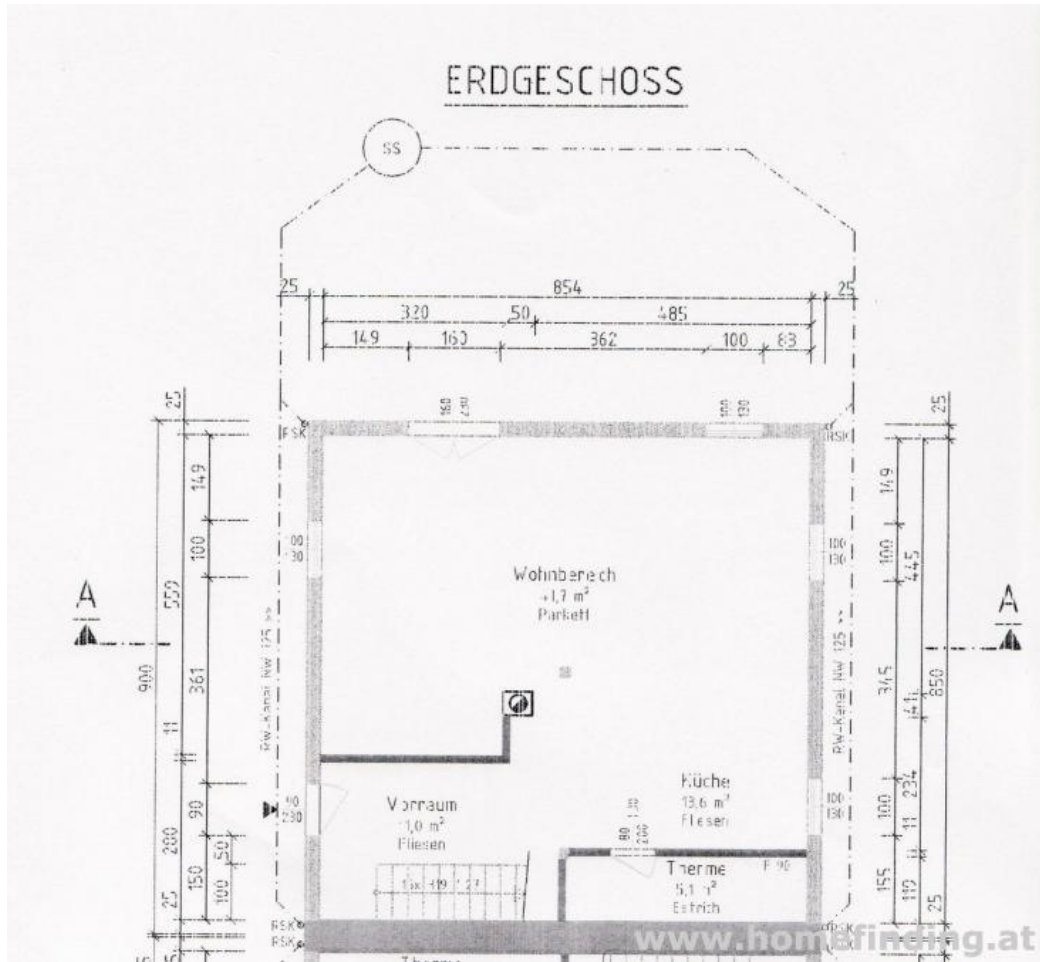
great view: nice semi detached house at Neulengbach

➤ 3040 Ebersberg/Neulengbach, Proximity: Ebersberg, Sankt Pöltner Straße

€ 1.780,-/month



Plans



About Property

This modern semi detached house is situated in small town 25 minutes away from Vienna.

LOCATION

Shops, restaurants, supermarkets can be found within 5 minutes walking distance/ short drive.

PROPERTY

It runs over 2 levels and shows following rooms:

>ground floor:

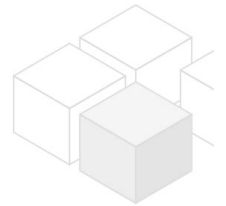
- .entree with staircase
- .living-dining room with fireplace + access to garden
- .open kitchen
- .storage room
- .guest toilet

>first floor:

- .hallway
- .3 bedrooms
- .bathroom (tub, shower, window)
- .separate toilet

equipment:

- .wooden and tiled floors
- .floor heating
- .open air parking for 2 cars.



COSTS

rent: general maintenance costs included, VAT-free

deposit: 4 gross rents

General

Propertynumber	582
Property type	Haus

Costs

total rent	€ 1.780,-
------------	-----------

Keyfacts

living area	140m ²
Grundfläche	329m ²
rooms	4
bedroom	3
bath	1

WC	2
Property age	Neubau
condition	sehr gut
Available from	sofort
Contract type	befristet

Furnishing

type of heating	Fussboden
Flooring	Parkettboden
parking	Freiplatz
kitchen	ja
Terrasse	1
Satellitenfernsehen	ja

Energy Performance Certificate

HWB Energieklasse	C
-------------------	---

Lage

Verkehrsanbindung Nähe	Bahn, Bus Ebersberg, Sankt Pöltner Straße
---------------------------	--

