

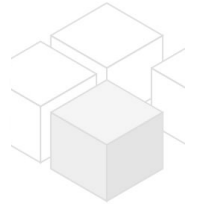
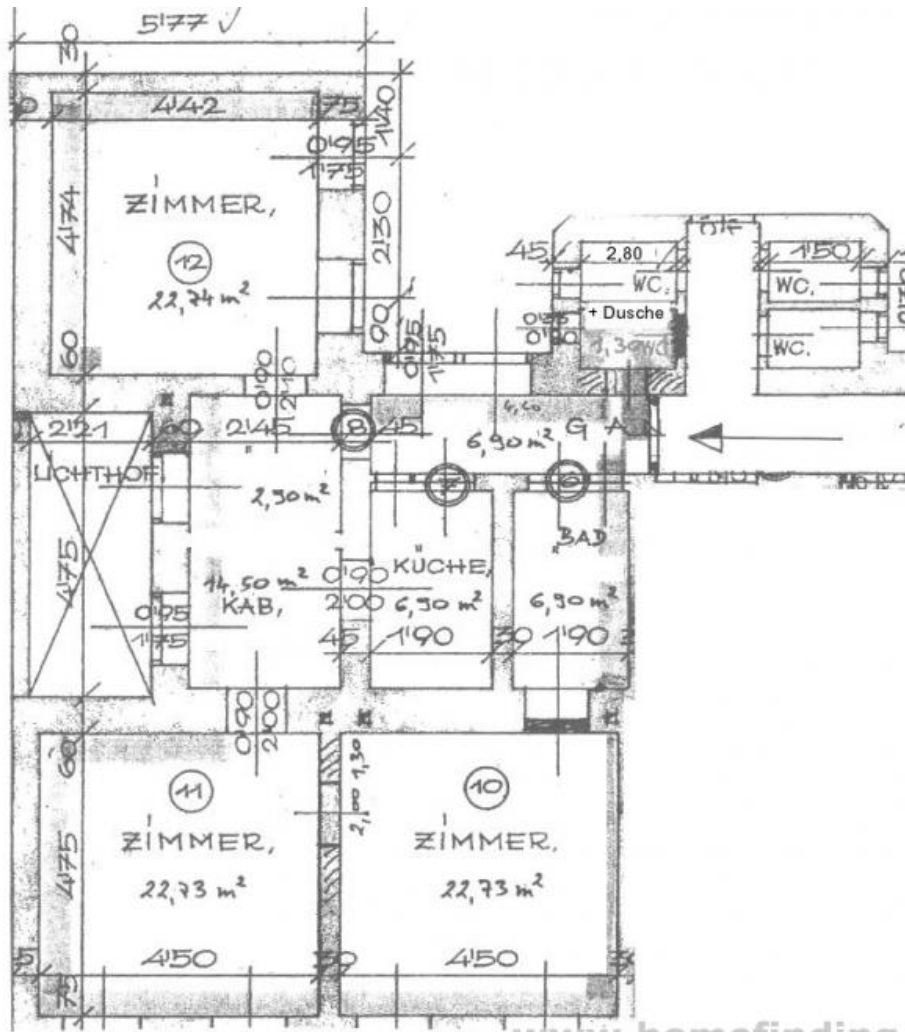
# old type apartment with 3 rooms

📍 1100 Wien, Proximity: Landgutgasse, Keplerplatz

€ 1.513,-/month



## Plans



## About Property

---

Large apartment in an old type bulding of the late 19th/early 20th century.

### LOCATION

The location is great: shops, restaurants, U1, etc ca be found within walking distance at Favoritenstraße.

### PROPERTY

The apartment itself has following rooms:

- .entree
- .living room
- .kitchen
- .2 bedrooms
- .bathroom with tub
- .second bathroom with shower + toilet.

### equipment:

- .wooden and tiled floors

### COSTS

rent: general maintenance costs and VAT included

deposit: € 4600,00

contract fee: € 360,00

## General

---

|                |         |
|----------------|---------|
| Propertynumber | 2759    |
| Property type  | Wohnung |

## Costs

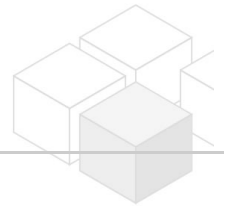
---

|                        |           |
|------------------------|-----------|
| net rent               | € 993,51  |
| gross rent             | € 1092.86 |
| operating cost         | € 255.14  |
| outher operating costs | € 165     |
| total rent             | € 1.513,- |

## Keyfacts

---

|              |                   |
|--------------|-------------------|
| living area  | 106m <sup>2</sup> |
| rooms        | 3                 |
| bedroom      | 2                 |
| bath         | 2                 |
| WC           | 1                 |
| Property age | Altbau            |



---

|                |           |
|----------------|-----------|
| condition      | sehr gut  |
| Available from | sofort    |
| Contract type  | befristet |

## Furnishing

---

|                 |               |
|-----------------|---------------|
| type of heating | Etagenheizung |
| Flooring        | Parkettboden  |
| parking         | --            |
| kitchen         | ja            |

## Energy Performance Certificate

---

|                   |   |
|-------------------|---|
| HWB Energieklasse | E |
|-------------------|---|

## Lage

---

|                           |  |
|---------------------------|--|
| Verkehrsanbindung<br>Nähe | U1 Keplerplatz, O<br>Landgutgasse, Keplerplatz |
|---------------------------|--|

