

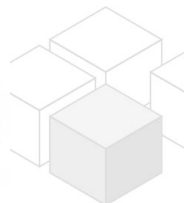
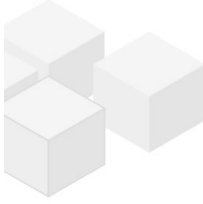
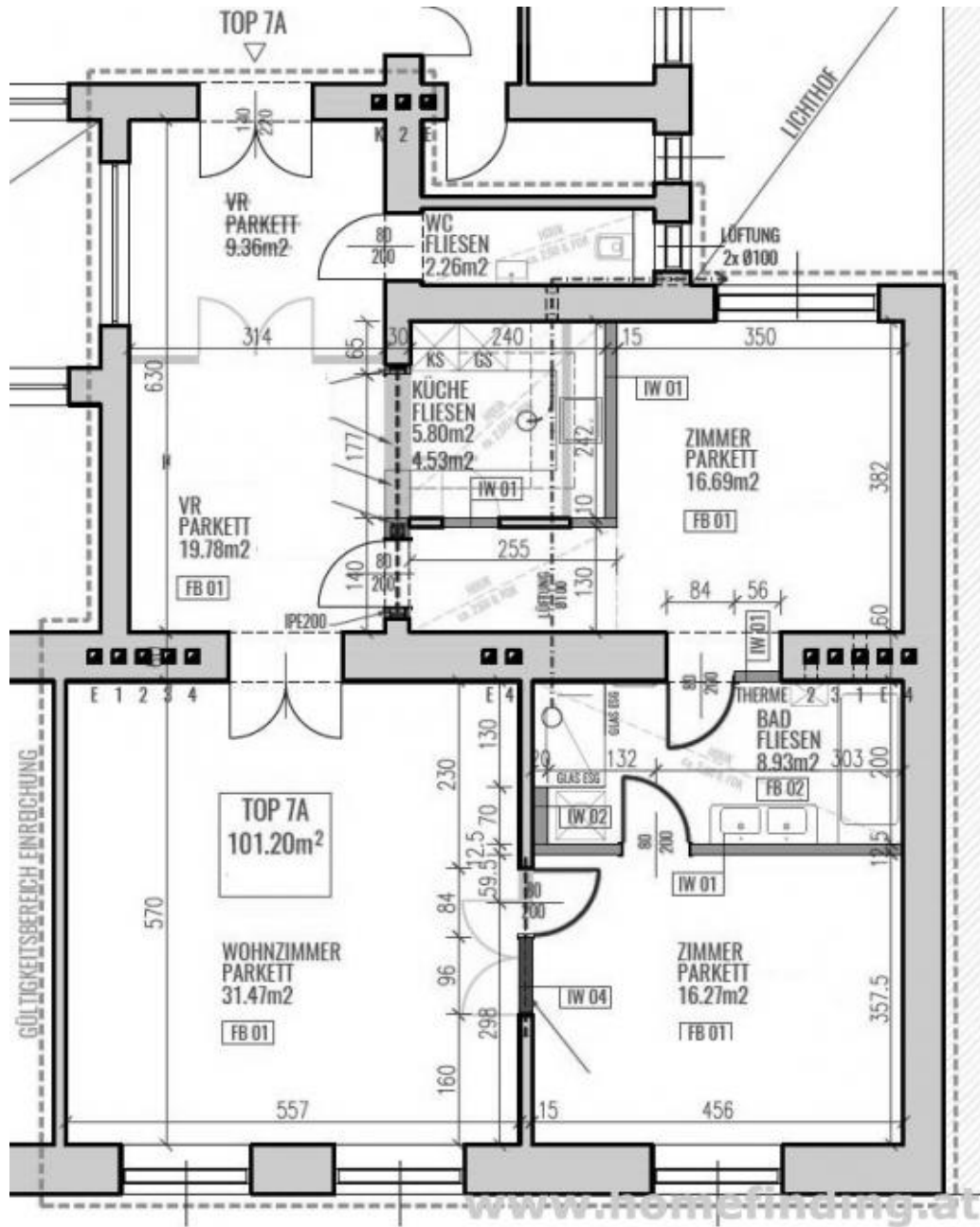
close to Burggarten/Naschmarkt: 3 rooms

📍 1010 Wien, Proximity: Schillerplatz, Burggarten

€ 2.288,70/month



Plans



About Property

This nice 3 room apartment is situated in nice old style building close to Museumsquartier, Burggarten.

LOCATION

Shops, supermarkets, restaurants, etc. can be found within walking distance. The well known Mariahilferstraße is just around the corner. Public lines are nearby and connect quickly with other districts.

PUBLIC TRANSPORT

U2, U1, U4, 57A, 1, 2, 71, D, 59A

PROPERTY

The apartment itself is on the first floor and shows following rooms:

- .big entrance with window
- .living dining room
- .separate kitchen
- .2 bedrooms (each ca 16m²)
- .bathroom (shower, toilet)
- .separate toilet

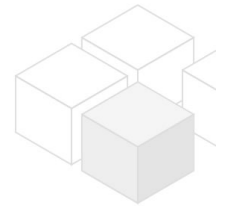
EQUIPMENT

- .wooden and tiled floors

COSTS

rent: general maintenance cost and VAT included

deposit: 3 gross rents



General

| | |
|-----------------|---------|
| Property number | 11692 |
| Property type | Wohnung |

Costs

| | |
|----------------|------------|
| net rent | € 1.876,22 |
| gross rent | € 2063.84 |
| operating cost | € 224.86 |
| total rent | € 2.288,70 |

Keyfacts

| | |
|-------------|---------------------|
| living area | 101.2m ² |
| rooms | 3 |
| bedroom | 2 |
| bath | 1 |

| | |
|---------------------------|--------------------|
| WC | 1 |
| Property age condition | Altbau sehr gut |
| Available from | sofort |
| Contract type | befristet |

Furnishing

| | |
|-----------------|---------------|
| type of heating | Etagenheizung |
| Flooring | Parkettboden |
| parking | -- |
| kitchen | ja |
| elevator | ja |

Energy Performance Certificate

| | |
|--------------------------------|------|
| HWB (kwh/m ² /Jahr) | 90.3 |
| HWB Energieklasse | C |

Lage

| | |
|---------------------------|--|
| Verkehrsanbindung Nähe | U2, U1, U4, 57A, 1, 2, 71, D, 59A Schillerplatz, Burggarten |
|---------------------------|--|

