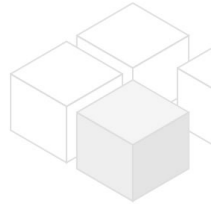
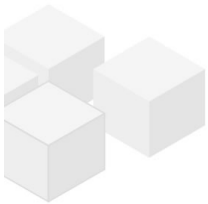


# Beautiful office in an oldstyle building- unlimited contract

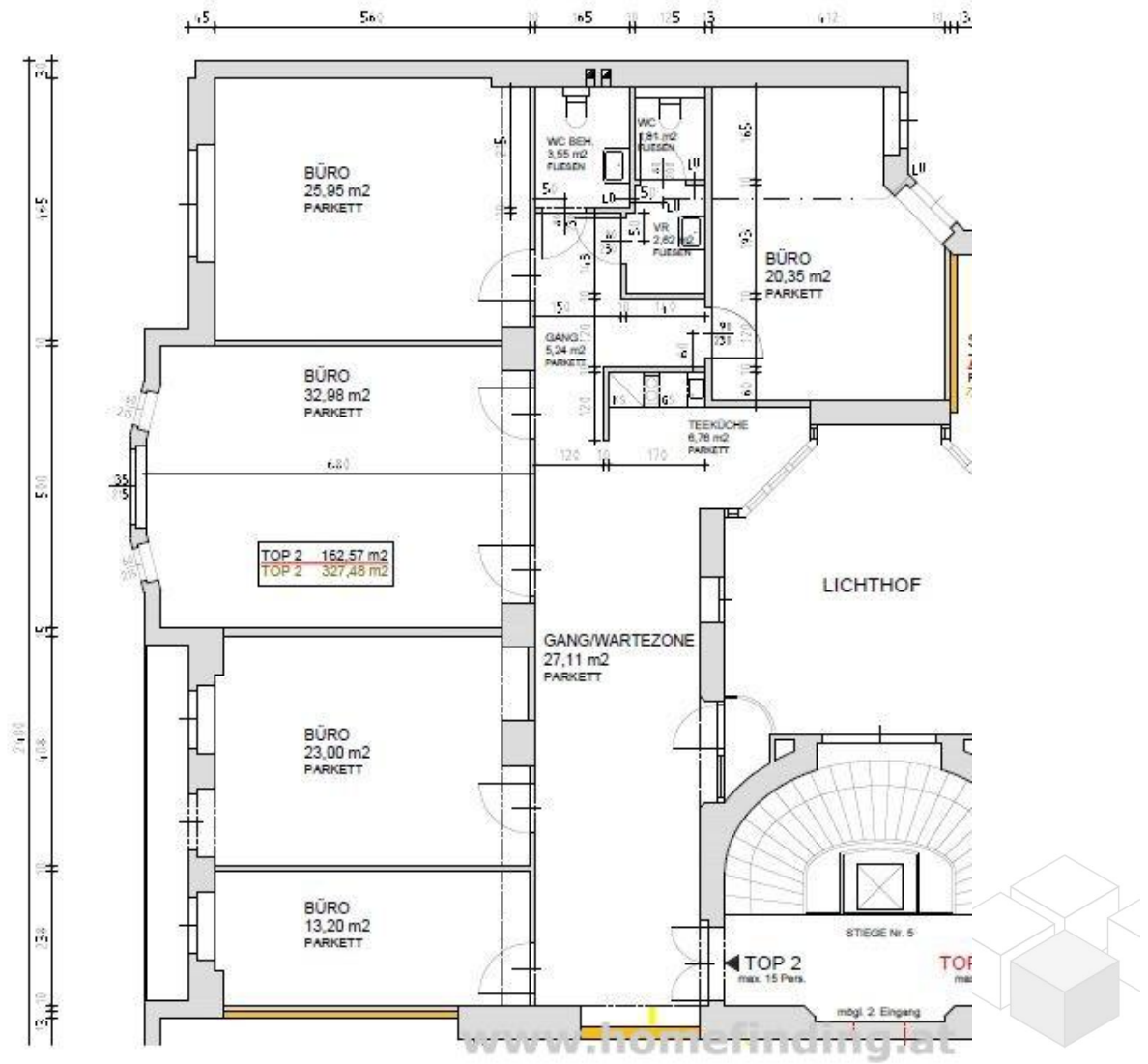


📍 1030 Wien, Proximity: Wien Mitte

€ 4.087,01/month



## Plans



## About Property

---

Nice office close to Wien Mitte

### LOCATION

Due to its central location, the property guarantees a quick connection to the public transport network and the best infrastructure. Facilities for daily needs such as shops, post office, banks, etc. are within walking distance.

### PUBLIC TRANSPORT

U3, U4, CAT, S1, S2, S3, S4, S7

### PROPERTY

The office has following rooms:

- .entrance
- .6 office rooms
- .2 toilets

### EQUIPMENT

- .elevator
- .Cellar in basement

### CONDITION

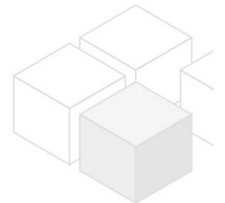
- .Contract duration: 10 years

### COST

Rent: general maintenance costs and VAT included

Deposit: 4 gross rents

commission: 3 rents + 20% VAT



## General

---

Property number	11646
Property type	Büro

## Costs

---

net rent	€ 3.088,83
gross rent	€ 3706.6
operating cost	€ 380.41
total rent	€ 4.087,01

## Keyfacts

---

Nutzfläche	162.57m <sup>2</sup>
rooms	5
WC	2

---

Property age	Altbau
condition	sehr gut
Available from	MAI 2025
Contract type	befristet

## Furnishing

---

type of heating	Etagenheizung
Flooring	Kunststoffboden
parking	--
kitchen	nein
elevator	ja

## Energy Performance Certificate

---

HWB (kwh/m <sup>2</sup> /Jahr)	125
HWB Energieklasse	D

## Lage

---

Verkehrsanbindung Nähe	U3, U4, CAT, S1, S2, S3, S4, S7 Wien Mitte
---------------------------	---

