

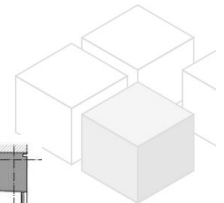
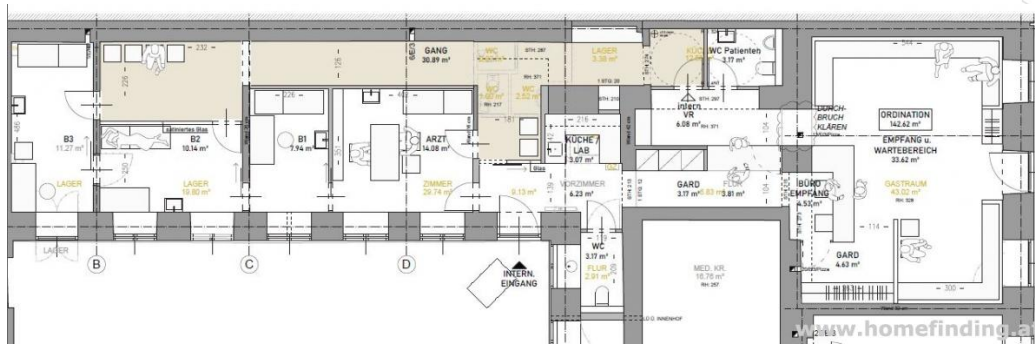
doctor's office close to Praterstern

📍 1020 Wien, Proximity: Praterstraße, Praterstern, Kleine Stadtgutgasse

€ 3.300,-/month



Plans



About Property

doctor's office walking distance to Praterstern/ Praterstraße

LOCATION

The location offers a big variety of shops, restaurants, supermarkets, pharmacy stores etc within walking distance. The public lines U1, U2, 80A, 5, O, 5B, S1, S2, S3, S7 connect fast with other districts /city center.

PROPERTY

It can have following rooms:

- .ca 33m2 entree
- .3-4 rooms
- .2 toilets
- .storage
- .tea kitchen

equipment:

- .ready for covering
- .interior construction is up to tenant

COSTS

rent: general maintenance cost included

deposit: 3 gross rents

commission: 3 rents + 20% VAT

General

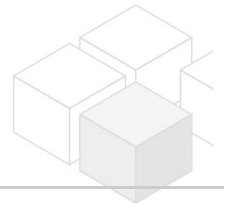
Property number	11578
Property type	Büro

Costs

total rent	€ 3.300,-
------------	-----------

Keyfacts

living area	142.62m ²
rooms	5
WC	2
Property age	Altbau
condition	--
Available from	sofort
Contract type	befristet



Furnishing

type of heating	Etagenheizung
Flooring	Estrich
parking	--
kitchen	nein

Energy Performance Certificate

HWB Energieklasse	E
-------------------	---

Lage

Verkehrsanbindung	U1, U2, 80A, 5, O, 5B, S1, S2, S3, S7
Nähe	Praterstraße, Praterstern, Kleine Stadtgutgasse

