

storage room close to Schubertpark

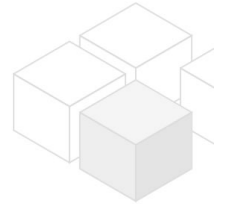
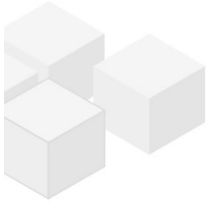
📍 1180 Wien, Proximity: Schubertpark

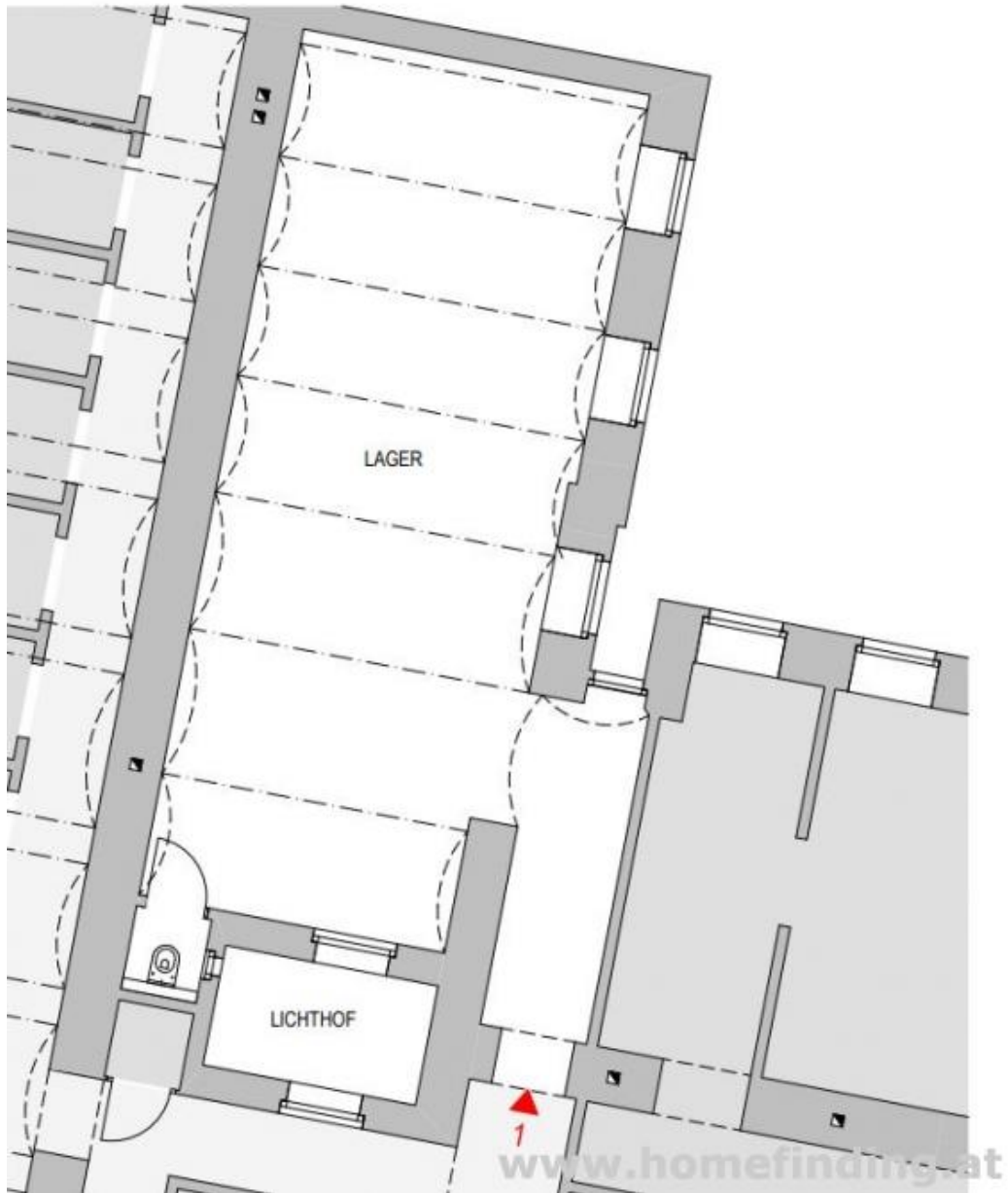
€ 474,44/month





Plans





About Property

storage space in an old style building next to Schubertpark and Währinger Straße. public transport (40, 41) can be reached by a short walk.

ROOMS:
1 big room

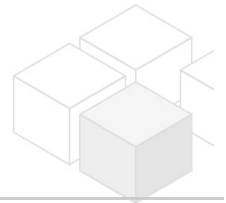
EQUIPMENT:
no heating

CONTRACT:
. 10 years
. cancellation after 3 years

COSTS
rent: general maintenance costs and VAT included
deposit: 6 gross rents
commission: 3 rents + 20% VAT
stamp fee

General

Property number	10908
Property type	Lager



Costs

net rent	€ 299,-
gross rent	€ 358.8
operating cost	€ 115.64
total rent	€ 474,44

Keyfacts

Nutzfläche	59.8m ²
Property age	Altbau
condition	--
Available from	sofort
Contract type	befristet

Furnishing

Flooring	--
parking	--
kitchen	nein

Energy Performance Certificate

HWB (kwh/m ² /Jahr)	71
HWB Energieklasse	C
fGEE Energieklasse	D

Lage

Verkehrsanbindung	40, 41
Nähe	Schubertpark

