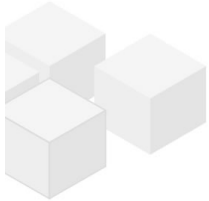


## storage room close to Schubertpark

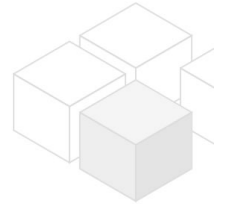
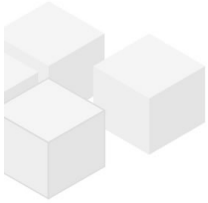
📍 1180 Wien, Proximity: Schubertpark

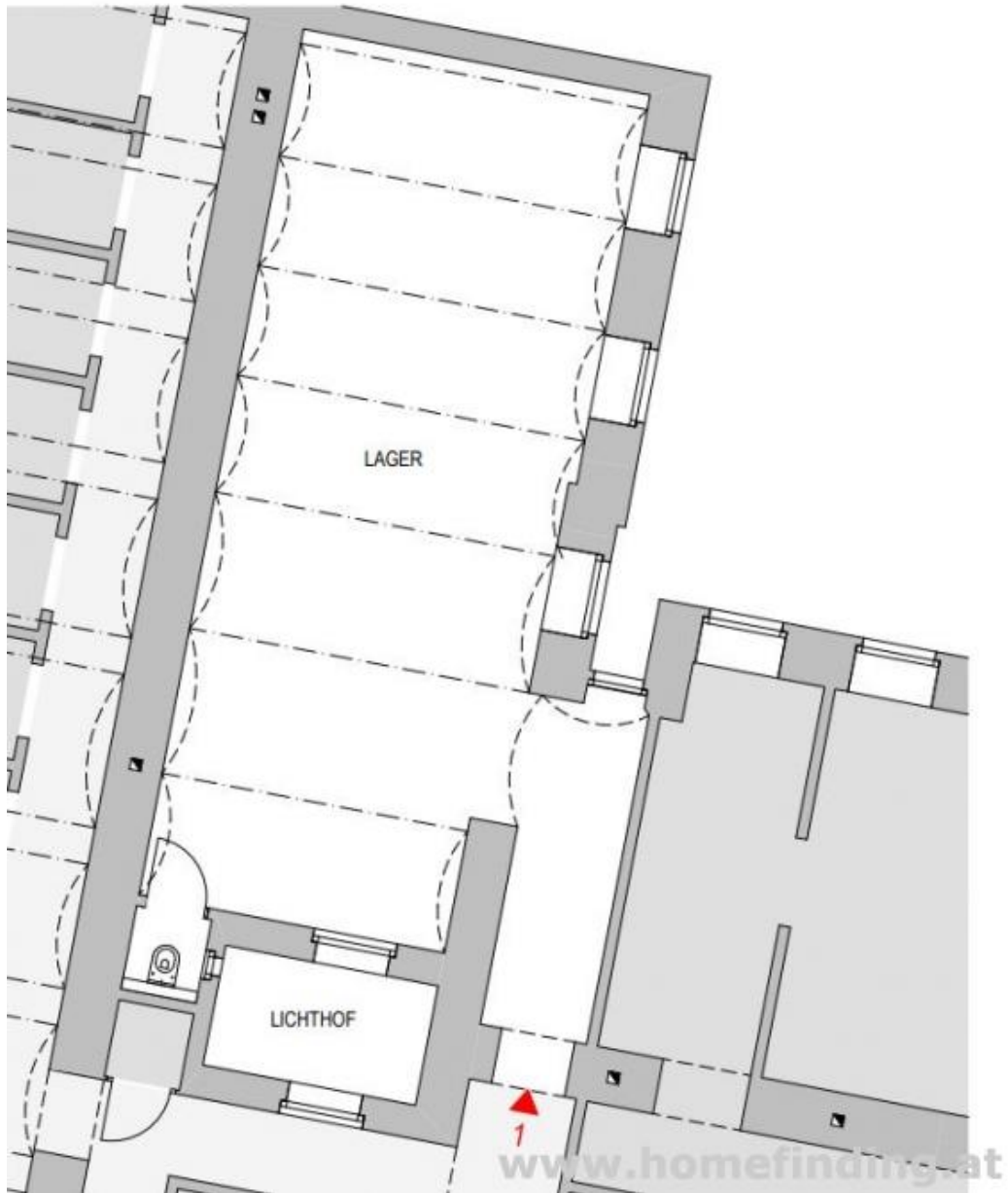
€ 474,44/month





## Plans





## About Property

storage space in an old style building next to Schubertpark and Währinger Straße. public transport (40, 41) can be reached by a short walk.

ROOMS:  
1 big room

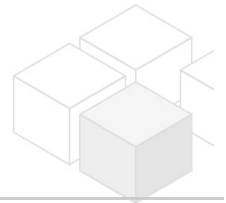
EQUIPMENT:  
no heating

CONTRACT:  
. 10 years  
. cancellation after 3 years

COSTS  
rent: general maintenance costs and VAT included  
deposit: 6 gross rents  
commission: 3 rents + 20% VAT  
stamp fee

## General

Property number	10908
Property type	Lager



## Costs

net rent	€ 299,-
gross rent	€ 358.8
operating cost	€ 115.64
total rent	€ 474,44

## Keyfacts

Nutzfläche	59.8m <sup>2</sup>
Property age	Altbau
condition	--
Available from	sofort
Contract type	befristet

## Furnishing

Flooring	--
parking	--
kitchen	nein

## Energy Performance Certificate

---

HWB (kwh/m <sup>2</sup> /Jahr)	71
HWB Energieklasse	C
fGEE Energieklasse	D

## Lage

---

Verkehrsanbindung	40, 41
Nähe	Schubertpark

