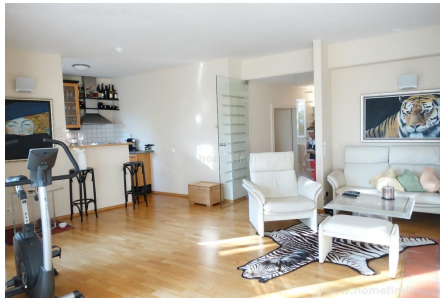
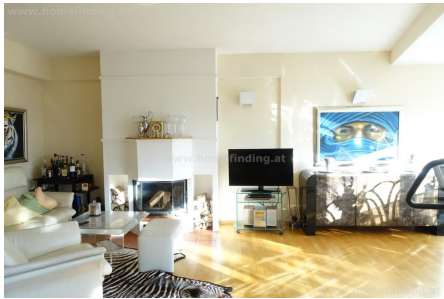


modern apartment with garden close to Lainzer Platz

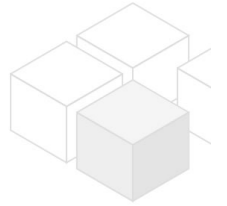
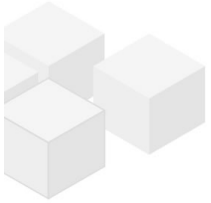


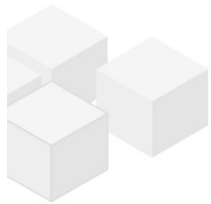
📍 1130 Wien, Proximity: Lainzer Platz

€ 1.500,-/month



Plans





About Property

This very nice 3 room apartment is situated on a small hill close to Lainzer Platz.

LOCATION

Shops, restaurants and public transport (tram) can be reached by a few steps.

PROPERTY

The apartment shows following rooms:

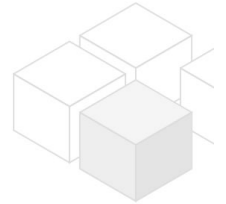
- .hallway
- .nice living dining room with partly open kitchen and winter garden
- .bedroom
- .second bedroom with built ins + winter garden + access to the garden
- .bathroom (tub, shower, window)
- .separate toilet
- .storage room

equipment:

- .wooden and tiled floors
- .fire place
- .2x winter garden
- .basement storage (ca 1.5m²)
- .garage (no 7: for a tiny car!).

COSTS

rent: general maintenance costs and garage included
deposit: 3 gross rents



General

Propertynumber	10045
Property type	Wohnung

Costs

net rent	€ 1.248,50
gross rent	€ 1248.5
operating cost	€ 251.5
total rent	€ 1.500,-

Keyfacts

living area	96.36m ²
Grünfläche	50m ²
rooms	3
bedroom	2
bath	1

WC	1
Property age	Neubau
condition	sehr gut
Available from	sofort
Contract type	befristet

Furnishing

type of heating	Etagenheizung
Flooring	Parkettboden
parking	Garage
kitchen	ja
Terrasse	1

Energy Performance Certificate

HWB Energieklasse	D
-------------------	---

Lage

Verkehrsanbindung Nähe	Straßenbahn 60 Lainzer Platz
---------------------------	---------------------------------

